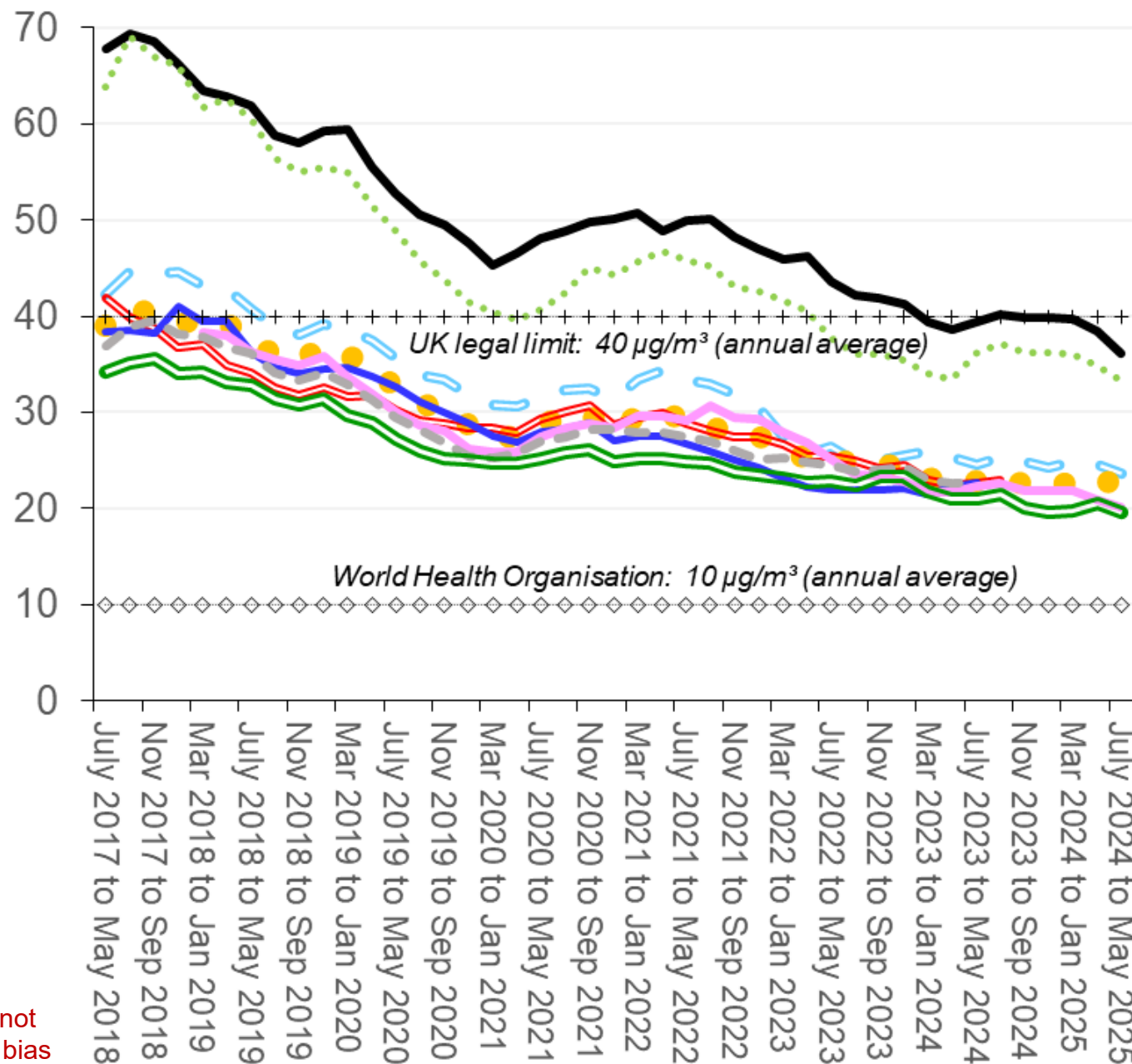


Schools

Through ward budgets, Westminster City Council is reimbursing the cost of the diffusion tubes used.

Nitrogen dioxide concentration
($\mu\text{g}/\text{m}^3$ micrograms per cubic metre)

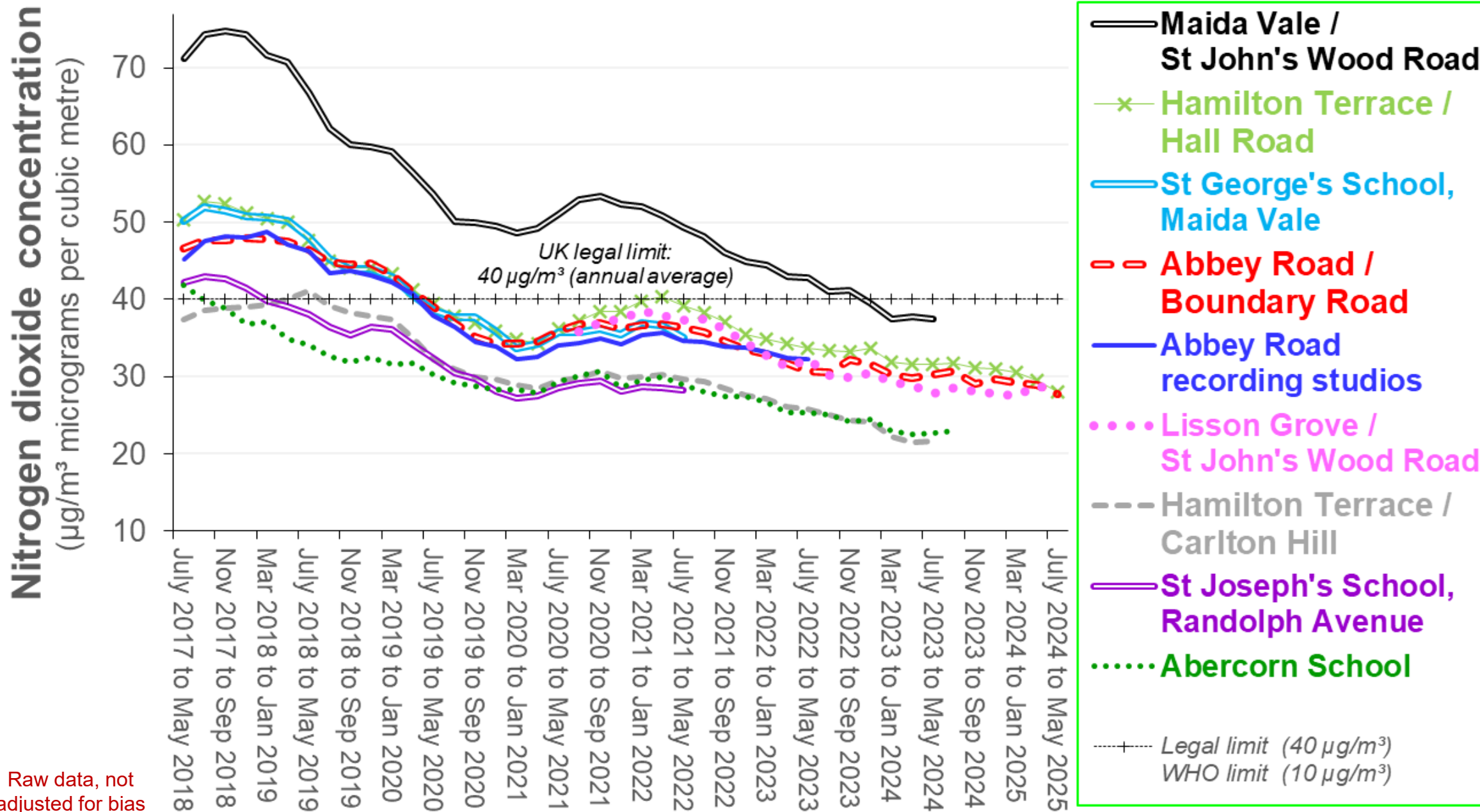


- Harris Academy, Finchley Road
- Beachcroft Academy
- Arnold House / Synagogue / St J & E Hospital
- ASL / Loudoun Road
- Abercorn School
- Barrow Hill Road / St John's Wood High Street
- St Christina's School
- Robinsfield / Acacia Road
- George Eliot, & also Harris Academy, Marlborough Hill
- + Legal limit ($40 \mu\text{g}/\text{m}^3$)
- ◇ WHO limit ($10 \mu\text{g}/\text{m}^3$)

Raw data, not
adjusted for bias

Abbey Road to Maida Vale

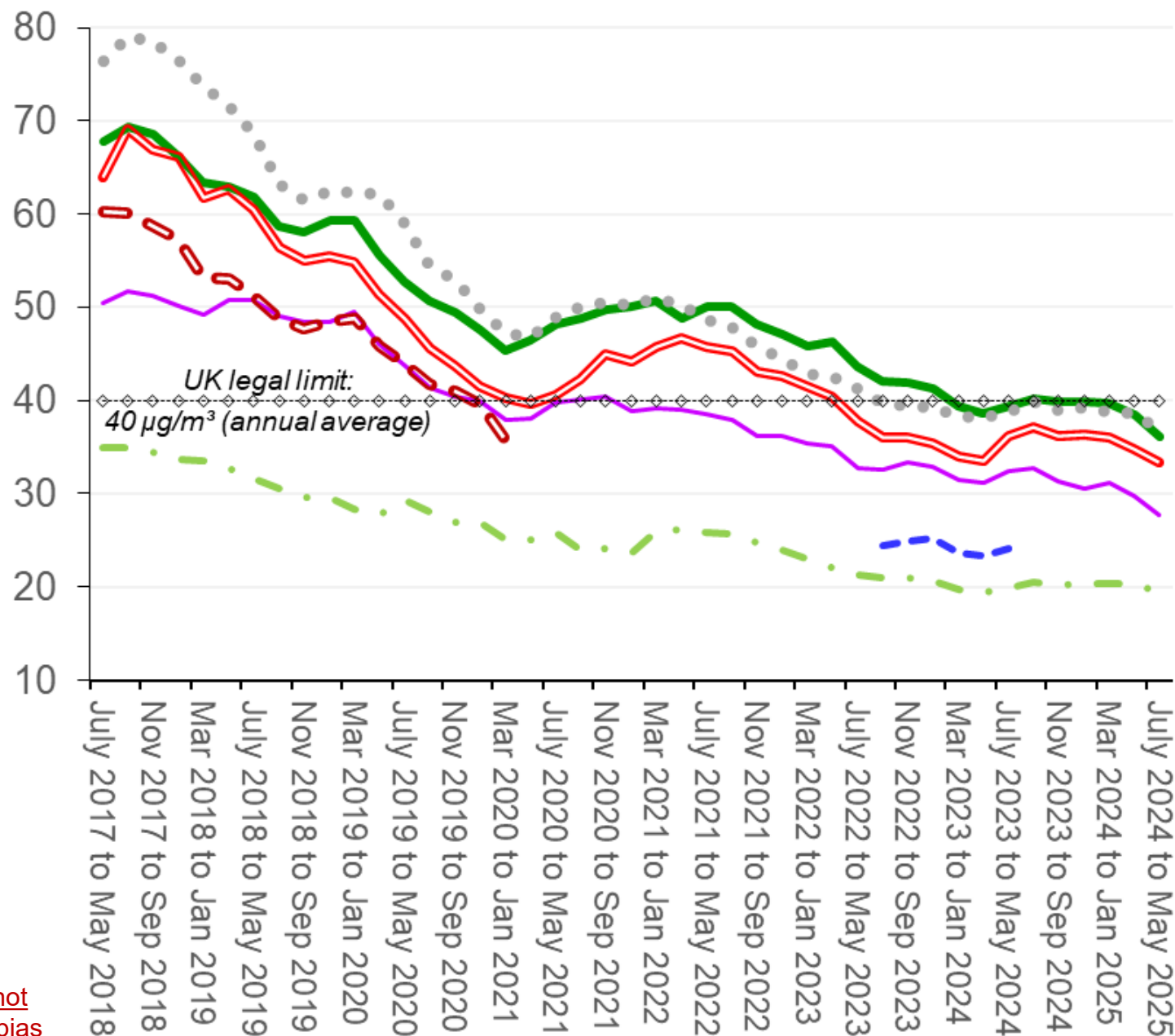
Through ward budgets, Westminster City Council is reimbursing the cost of the diffusion tubes used.



Finchley Road - Wellington Road

Through ward budgets, Westminster City Council is reimbursing the cost of the diffusion tubes used.

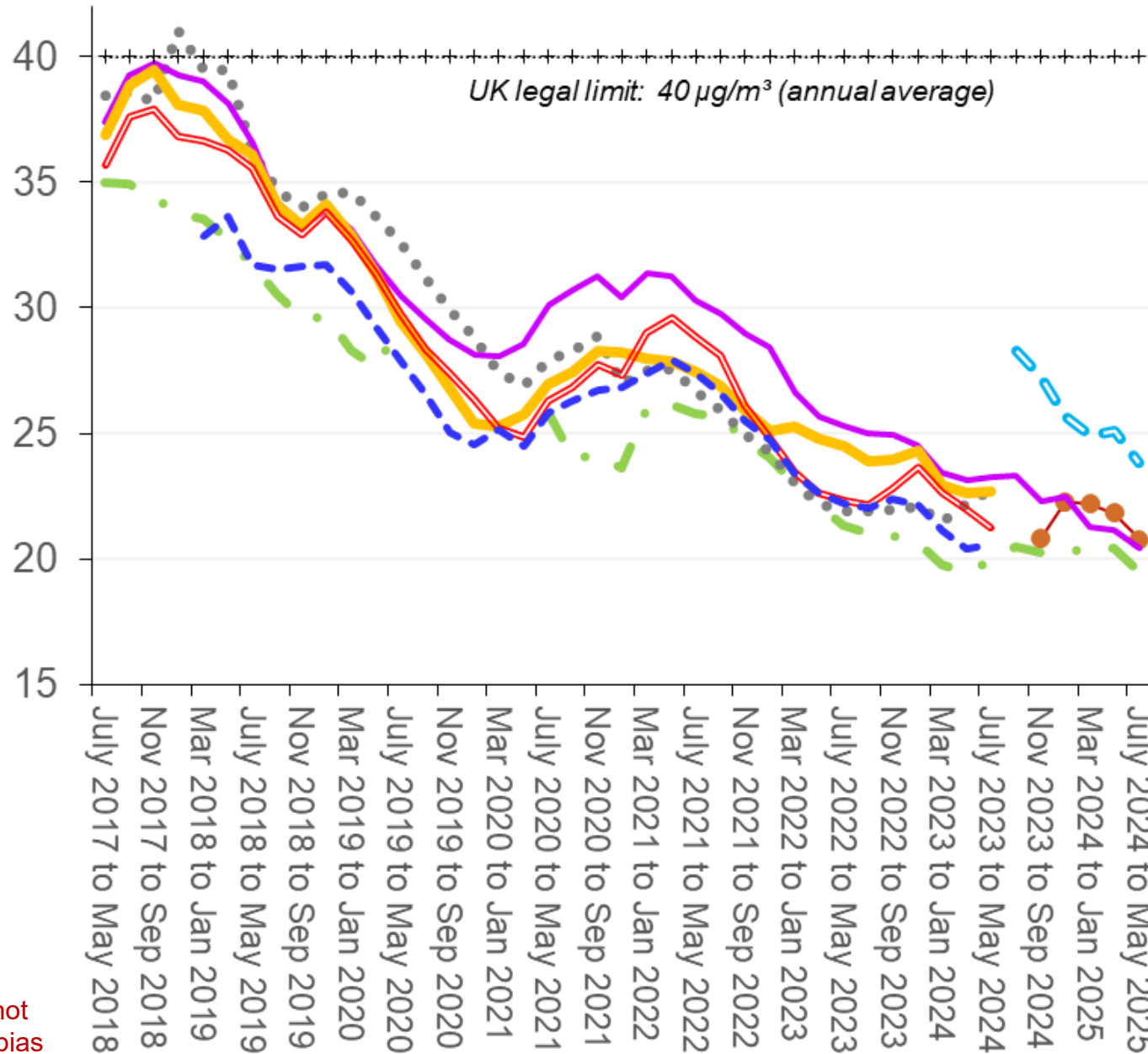
Nitrogen dioxide concentration
($\mu\text{g}/\text{m}^3$ micrograms per cubic metre)



Central sites

Through ward budgets, Westminster City Council is reimbursing the cost of the diffusion tubes used.

Nitrogen dioxide concentration
($\mu\text{g}/\text{m}^3$ micrograms per cubic metre)



Raw data, not
adjusted for bias

Avenue Road and neighbourhood

Through ward budgets, Westminster City Council is reimbursing the cost of the diffusion tubes used.

